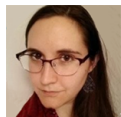
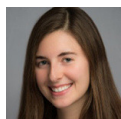


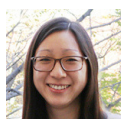
2019 APLIC ATTENDEES & SPEAKERS



Allison Campbell
Knowledge Services Advisor, Ipas
<https://www.linkedin.com/in/allison-campbell-64a30374/>



Amanda Berry
Senior Research Assistant, Guttmacher Institute (New York, NY)
<https://www.linkedin.com/in/berryamanda/>



Anita Lai
Information Coordinator, University of Pennsylvania Population Studies Center
<https://www.linkedin.com/in/anita-lai/>



Ann Glusker
Sociology, Demography, & Quantitative Research Librarian, University of California, Berkeley
<https://www.linkedin.com/in/aglusker/>



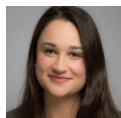
Carolyn Cunningham
Head of Teaching and Learning Engagement Team, University of Texas Libraries
<https://www.linkedin.com/in/carolyncunningham/>



Debra Dickson
POPLINE Manager - Knowledge for Health (K4Health), Johns Hopkins Bloomberg School of Public Health
<https://www.linkedin.com/in/debra-dickson-a453b811/>



Elana Broch
Assistant Population Research Librarian, Princeton University Office of Population Research
<https://www.linkedin.com/in/elana-broch-6337465/>



Erin McGee
Research Administrative Coordinator, Guttmacher Institute (New York, NY)
<https://www.linkedin.com/in/erin-mcgee-23576880/>



Janelle Hedstrom
Education Librarian and Head of the STEM & Social Sciences Engagement Team, University of Texas Libraries
https://guides.lib.utexas.edu/prf.php?account_id=92152



Jean Sack
Library Consultant, Johns Hopkins Jhipiego (Baltimore, MD)
<https://www.linkedin.com/in/jeansack/>



Joann Donatiello
Population Research Librarian, Princeton University
<https://www.linkedin.com/in/joann-donatiello-8505a8b/>



Kelly Rose
Technical Services Librarian, Ipas

2019 APLIC ATTENDEES & SPEAKERS



Liz Nugent

Director of Communications, University Research Co., LLC (Bethesda, MD)

<https://www.linkedin.com/in/liznugentdc/>



Liza Talbot

Digital Archivist, LBJ Presidential Library

<https://www.linkedin.com/in/liza-talbot-197b807/>



Lori Delaney

Head, Library and Research Translation Services, University of North Carolina, Chapel Hill, Carolina Population Center

<https://www.linkedin.com/in/lori-delaney-62456849/>



Mary White

Global Public Health Librarian, University of North Carolina, Chapel Hill, Health Sciences Library

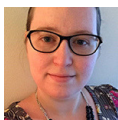
<https://www.linkedin.com/in/mary-white-285a7b83/>



Meg Schurr

Senior Research Administrative Assistant, Guttmacher Institute (New York, NY)

<https://www.linkedin.com/in/margaret-schurr-200334ba>



Molly Caple

Library Technician, PATH (Seattle, WA)

<https://www.linkedin.com/in/mollycaple/>



Nykia Perez Kibler

Director of Information Management, University of Pennsylvania Population Studies Center

<https://www.linkedin.com/in/nykiaperezkibler/>



Roxanne Bogucka

STEM Liaison Librarian for Health Sciences, University of Texas

<https://www.linkedin.com/in/roxanne-bogucka-02776b8>



Ryan Edge

Digital Production and Metadata Lead, Gates Archive

<https://www.linkedin.com/in/ryan-n-edge-87688854/>



Shannon Crane

Media and Outreach Coordinator, University of Pennsylvania Population Studies Center

<https://www.linkedin.com/in/shannon-crane-96b164100/>



Timothy Mercer

Director of Global Health Program/Assistant Professor, Department of Population Health, University of Texas at Austin

<https://www.linkedin.com/in/tim-mercercdc-mph-02517121/>